







## Advanced Pods Pty Ltd

-  0490138401
-  [sales@advancedpods.com.au](mailto:sales@advancedpods.com.au)
-  [www.advancedpods.com.au](http://www.advancedpods.com.au)
-  78 Sultana Rd, High Wycombe, WA 6057

## Advanced Pods

---- Since 2025

Outdoor Kitchen Pods Introduction

## Why Choose Us?

### Stainless Steel Door Panels

1 door panel / 6-layer structure Comparable to automotive paint, 220°C environmentally friendly baking process

① **3D wood grain printing layer**

Natural warmth, compatible with various decor styles.

② **Formaldehyde-free color base layer**

Cured at 220°C, providing high durability and fade resistance.

③ **304 stainless steel protective layer**

Waterproof and moisture-resistant, ensuring long-lasting durability.

④ **Aerospace aluminum honeycomb layer**

Bionic design, enhancing door panel support strength.

⑤ **304 stainless steel base layer**

Improves door panel sealing.

⑥ **Stainless steel linen anti-fingerprint texture**

Purely physical process, achieving anti-fingerprint effect.



### Stainless Steel Cabinet

Durable and pressure-resistant cabinet is built with an internal stainless steel frame for reinforcement.

Screws fasten securely without loosening or stripping  
This is a kitchen cabinet that can last for 50 years



### Outdoor BBQ Pod – Mini



### Specs

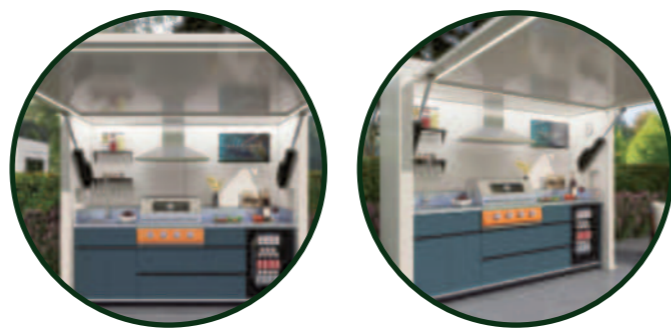
### Dimensions



### Configurations

| Category              | No. | Configuration Name               | Specification  | Remarks        |
|-----------------------|-----|----------------------------------|--|----------------|
| Size Configuration    | 1   | BBQ Pod Outer Dimensions         | L2210mm × W1002mm × H2350mm  |                |
|                       | 2   | Door Opening Angle               | 90°  |                |
|                       | 3   | Total Open Dimensions            | L2210mm × W3202mm × H2350mm  |                |
| Basic Configuration   | 4   | Material                         | Stainless Steel  |                |
|                       | 5   | Distribution Box                 | Rear-right side  |                |
|                       | 6   | BBQ Pod Gate                     | Electric control   | Remote Control |
|                       | 7   | Stainless Steel Sink             | AF-4541  |                |
|                       | 8   | Faucet                           | AF-C03 Stainless Steel Pull-Out Faucet   |                |
|                       | 9   | BBQ Grill                        | Built-in 30-Inch   |                |
|                       | 10  | Refrigerator                     | 21inch Glass doors/stainless steel doors   |                |
|                       | 11  | Drawer                           | Imported Blum  |                |
|                       | 12  | Gate Surrounding RGB Light Strip | 24V Adjustable RGB Lighting  | Remote Control |
|                       | 13  | Lighting Function                | COB 24V Waterproof Lighting (Includes Top, Inner Top, Side, and Toe Kick Light Strips) |                |
| Customization Options | 14  | Exterior Color                   | Customizable   |                |
|                       | 15  | Cabinets Color                   | Door Panel color customizable  |                |
|                       | 16  | Interior Countertop Material     | Stainless steel / Sintered Stone   |                |
|                       | 17  | Wine Glass Holder                | Optional   |                |
|                       | 18  | Wall-mounted Storage Shelf       | Customizable levels  |                |

### Outdoor BBQ Pod – Plus



#### Specs

#### Dimensions



#### Configurations

| Category                | No. | Configuration Name               | Specification  | Remarks           |
|-------------------------|-----|----------------------------------|--|-------------------|
| Size Configuration      | 1   | BBQ Pod Outer Dimensions         | L2690mm × W1002mm × H2350mm  |                   |
|                         | 2   | Door Opening Angle               | 90°  |                   |
|                         | 3   | Total Open Dimensions            | L2690mm × W3202mm × H2350mm  |                   |
| Basic Configuration     | 4   | Material                         | Stainless Steel  |                   |
|                         | 5   | Distribution Box                 | Rear-right side  |                   |
|                         | 6   | BBQ Pod Gate                     | Electric control   | Remote Control    |
|                         | 7   | Stainless Steel Sink             | AF-4541  |                   |
|                         | 8   | Faucet                           | AF-C03 Stainless Steel Pull-Out Faucet   |                   |
|                         | 9   | Drawer                           | Imported Blum  |                   |
|                         | 10  | BBQ Grill                        | Built-in 30-Inch   |                   |
|                         | 11  | Gate Surrounding RGB Light Strip | 24V Adjustable RGB Lighting  | Remote Control    |
| Appliance Configuration | 12  | Lighting Function                | COB 24V Waterproof Lighting (Includes Top, Inner Top, Side, and Toe Kick Light Strips) |                   |
|                         | 13  | Refrigerator                     | 21inch Glass doors/stainless steel doors   |                   |
|                         | 14  | Range Hood                       | European style   |                   |
| Customization Options   | 15  | Television                       | 32-Inch LCD TV with Telescopic Mounting Bracket  | Remote Control    |
|                         | 16  | Built-in Audio System            | Wireless Bluetooth, Premium Sound  | Bluetooth Control |
|                         | 17  | Exterior Color                   | Color customizable   |                   |
|                         | 18  | Cabinets Color                   | Door Panel color customizable  |                   |
|                         | 19  | Interior Countertop Material     | Stainless steel / Sintered Stone   |                   |
|                         | 20  | Wine Glass Holder                | Optional   |                   |
|                         | 21  | Wall-mounted Storage Shelf       | Adjustable Levels  |                   |

### Outdoor BBQ Pod - Max



#### Specs

#### Dimensions



#### Configurations

| Category                | No. | Configuration Name               | Specification  | Remarks           |
|-------------------------|-----|----------------------------------|--|-------------------|
| Size Configuration      | 1   | BBQ Pod Outer Dimensions         | L3500mm × W1002mm × H2350mm  |                   |
|                         | 2   | Door Opening Angle               | 90°  |                   |
|                         | 3   | Total Open Dimensions            | L3500mm × W3202mm × H2350mm  |                   |
| Basic Configuration     | 4   | Material                         | Stainless Steel  |                   |
|                         | 5   | Distribution Box                 | Rear-right side  |                   |
|                         | 6   | BBQ Pod Gate                     | Electric control   | Remote Control    |
|                         | 7   | BBQ Grill                        | Built-in 36-Inch   |                   |
|                         | 8   | Stainless Steel Sink             | AF-4541  |                   |
|                         | 9   | Faucet                           | AF-C03 Stainless Steel Pull-Out Faucet   |                   |
|                         | 10  | Drawer                           | Imported Blum  |                   |
|                         | 11  | Electric Lift Spice Cabinet      | Electric control   |                   |
|                         | 12  | Gate Surrounding RGB Light Strip | 24V Adjustable RGB Lighting  | Remote Control    |
|                         | 13  | Lighting Function                | COB 24V Waterproof Lighting (Includes Top, Inner Top, Side, and Toe Kick Light Strips) |                   |
| Appliance Configuration | 14  | Refrigerator                     | 24 inch Glass doors/stainless steel doors  |                   |
|                         | 15  | Range Hood                       | European style   |                   |
|                         | 16  | Television                       | 42-Inch LCD TV with Telescopic Mounting Bracket  | Remote Control    |
| Customization Options   | 17  | Built-in Audio System            | Wireless Bluetooth, Premium Sound  | Bluetooth Control |
|                         | 18  | Exterior Color                   | Color customizable   |                   |
|                         | 19  | Cabinets Color                   | Door Panel color customizable  |                   |
|                         | 20  | Interior Countertop Material     | Stainless steel / Sintered Stone   |                   |
|                         | 21  | Wine Glass Holder                | Optional   |                   |
|                         | 22  | Wall-mounted Storage Shelf       | Adjustable Levels  |                   |

## Outdoor BBQ Pod - Ultra



### Specs



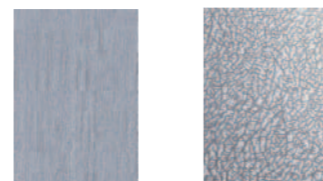
### Dimensions

### Configurations

| Category              | No. | Configuration Name               | Specification  | Remarks        |
|-----------------------|-----|----------------------------------|--|----------------|
| Size Configuration    | 1   | BBQ Pod Outer Dimensions         | L3760mm × W1002mm × H2350mm  |                |
|                       | 2   | Door Opening Angle               | 90°  |                |
|                       | 3   | Total Open Dimensions            | L3760mm × W3202mm × H2350mm  |                |
| Basic Configuration   | 4   | Material                         | Stainless Steel  |                |
|                       | 5   | Distribution Box                 | Rear-right side  |                |
|                       | 6   | BBQ Pod Gate                     | Electric control   | Remote Control |
|                       | 7   | Stainless Steel Sink             | AF-4541  |                |
|                       | 8   | Faucet                           | AF-C03 Stainless Steel Pull-Out Faucet   |                |
|                       | 9   | BBQ Grill                        | Built-in 46-Inch   |                |
|                       | 10  | Refrigerator                     | 24 inch Glass doors/stainless steel doors  |                |
|                       | 11  | Drawer                           | Imported Blum  |                |
|                       | 12  | Gate Surrounding RGB Light Strip | 24V Adjustable RGB Lighting  | Remote Control |
|                       | 13  | Lighting Function                | COB 24V Waterproof Lighting (Includes Top, Inner Top, Side, and Toe Kick Light Strips) |                |
| Customization Options | 14  | Television                       | 42-inch LCD TV with telescopic mounting bracket  |                |
|                       | 15  | Exterior Color                   | Customizable   |                |
|                       | 16  | Cabinets Color                   | Door Panel color customizable  |                |
|                       | 17  | Interior Countertop Material     | Stainless steel / Sintered Stone   |                |
|                       | 18  | Wine Glass Holder                | Optional   |                |
|                       | 19  | Wall-mounted Storage Shelf       | Customizable levels  |                |

### Benchtop Options

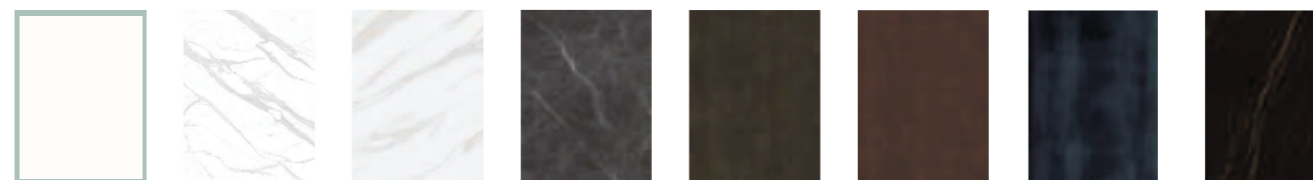
#### SUS304 Stainless Steel Countertop



Texture: Tree Bark  
Code: SS-A01

Texture: Rhino Skin  
Code: SS-A01

#### Sintered Stone



Color: Aurora White  
Code: CSS-A01

Color: Saint Blanc Belly White  
Code: CSS-A02

Color: Garda Belly Gold  
Code: CSS-A03

Color: Bosinia Gray  
Code: CSS-A04

Color: Marsha Gray  
Code: CSS-A05

Color: Marsha Brown  
Code: CSS-A06

Color: Titanium Blue  
Code: CSS-A07

Color: Saronlan  
Code: CSS-A08

### Powder-Coated Colour Options for the Exterior of Outdoor BBQ Pods



Color: Athens White  
Code: IEPC-A01

Color: Matte Beige  
Code: IEPC-A02

Color: Khaki Grey Sand Texture  
Code: IEPC-A03

Color: Grey Sparkle Micro Particles  
Code: IEPC-A04

Color: Light Medium Grey Sand Texture  
Code: IEPC-A05

Color: Silver Grey Sand Texture  
Code: IEPC-A06

Color: Medium Grey Sand Texture  
Code: IEPC-A0

Color: Grey Shimmer Silver  
Code: IEPC-A08

Color: Purple-Grey Pine Blossom  
Code: IEPC-A09

Color: Black Sand Texture  
Code: IEPC-A10

### Powder-Coated, Wood Grain Transfer, or Sintered Stone Finish Options for Cabinets and Interior BBQ Pods

#### Powder-Coated



Color: Athens White  
Code: IEPC-A01

Color: Matte Beige  
Code: IEPC-A02

Color: Khaki Grey Sand Texture  
Code: IEPC-A03

Color: Grey Sparkle Micro Particles  
Code: IEPC-A04

Color: Light Medium Grey Sand Texture  
Code: IEPC-A05

Color: Silver Grey Sand Texture  
Code: IEPC-A06



Color: Medium Grey Sand Texture  
Code: IEPC-A07

Color: Grey Shimmer Silver  
Code: IEPC-A08

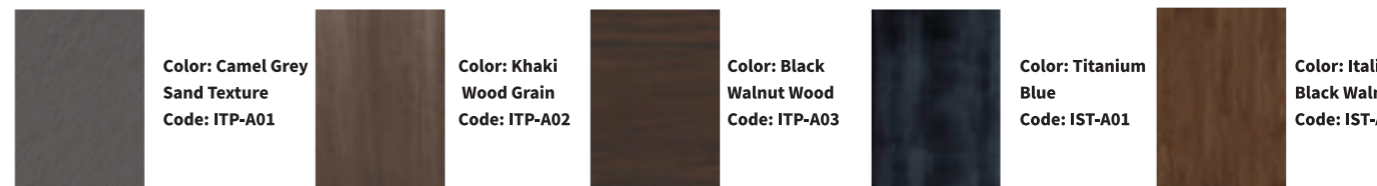
Color: Purple-Grey Pine Blossom  
Code: IEPC-A09

Color: Black Sand Texture  
Code: IEPC-A10

Color: Olive Green  
Code: IEPC-A11

Color: Lake Green Sparkle  
Code: IEPC-A12

#### Wood Grain Transfer



Color: Camel Grey Sand Texture  
Code: ITP-A01

Color: Khaki Wood Grain  
Code: ITP-A02

Color: Black Walnut Wood  
Code: ITP-A03

Color: Titanium Blue  
Code: IST-A01

Color: Italian Black Walnut  
Code: IST-A02

#### Sintered Stone (For Cabinets Only)