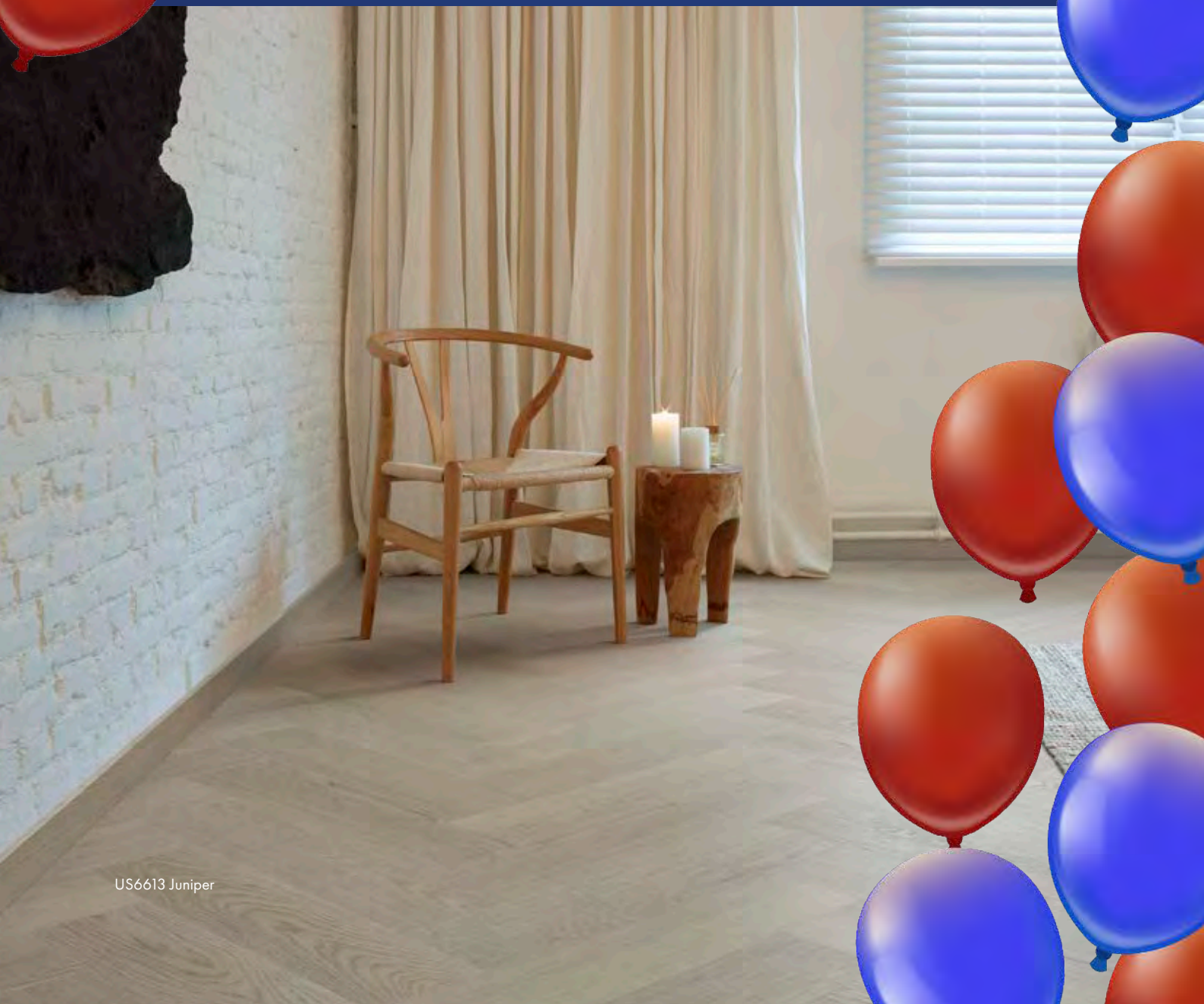


BRISBANE HOME SHOW

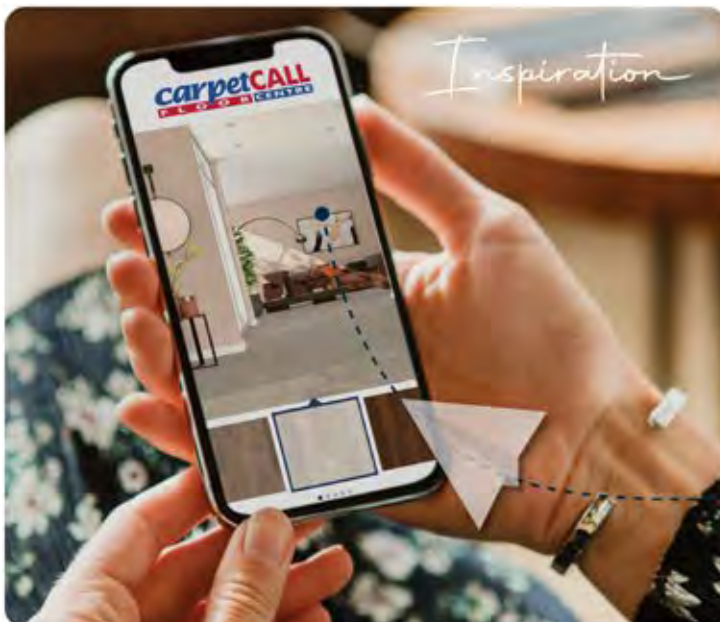
2025





CONTENTS

- 1 Hard Flooring
- 5 Carpets
- 9 Window Coverings
- 13 Rugs
- 16 Exclusive Home Show Offer
- 20 Your One-Stop Solution



Find inspiration, discover new products
and exciting sales

Enter your email address

Subscribe

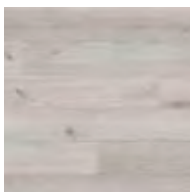


CORETEC

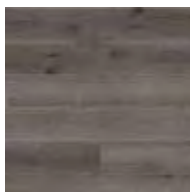
Coretec Pro Plus – US19

This collection features unique and innovative visuals on durable vinyl. Its rigid core includes special top and bottom layers for enhanced stability and is crafted from a high density composition for extra rigidity, providing superior impact and dent resistance.

Suitable for both commercial and residential use, this series can be installed in high moisture and high traffic areas. Available in 9 colours, the planks measure 1520 mm in length, 183 mm in width, and 5 mm in thickness.



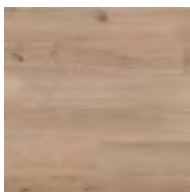
US1911 Opera



US1912 Harpa



US1913 Piano



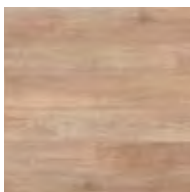
US1914 Perot



US1918 Mirage



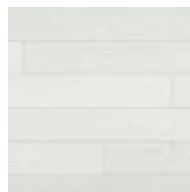
US1924 Millay



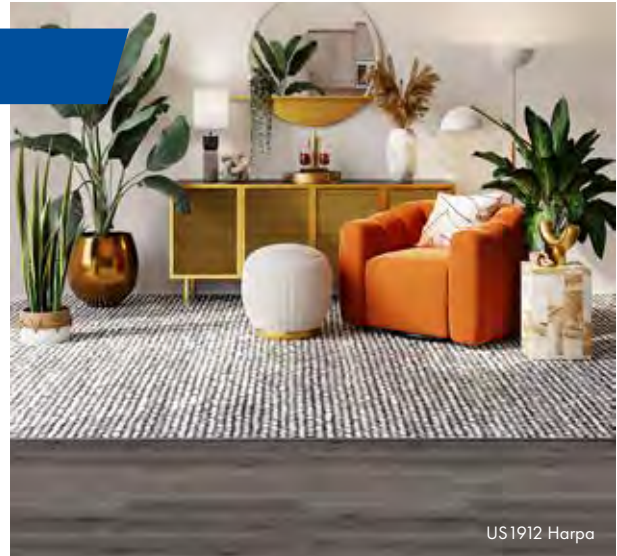
US1927 Willis



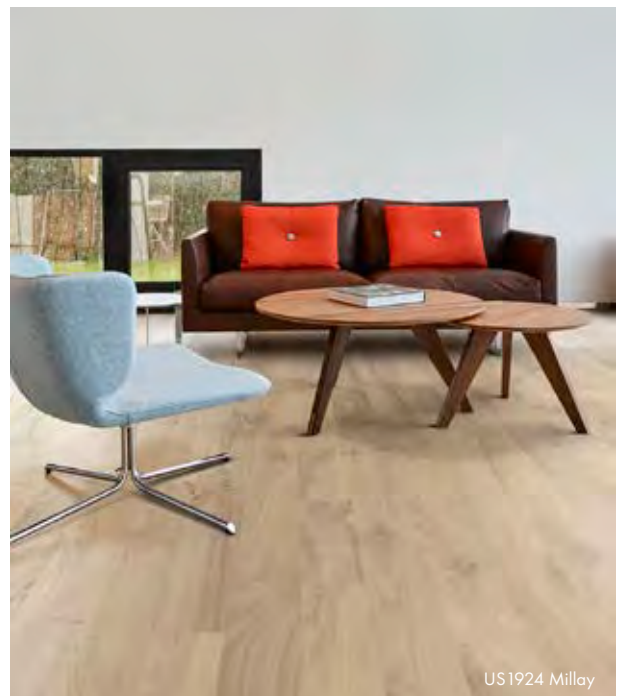
US1920 Kingdom



US1930 Aria



US1912 Harpa



US1924 Millay



US1930 Aria

COREtec
FLOORS

Coretec Naturals XL Herringbone

Colours



US6656 Aurora



US6654 Barley



US6613 Juniper

Specifications

Pack Size:	2.92m ²
Board Size:	604 x 151 x 8 mm
Board per Pack:	32



US6656 Aurora



The **NATURALS**
COLLECTION

US6654 Barley

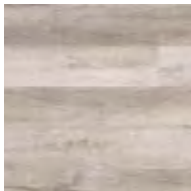
Expert Assistance at Carpet Call

Carpet Call's flooring experts stand ready to help you choose the ideal flooring type tailored to your lifestyle needs, style preferences, and budget. For personalized guidance, explore our Hard Flooring Buying Guide, and make the most of our complimentary home measure and flooring quote service.



Coretec Pro Plus

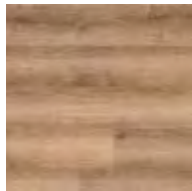
Colours



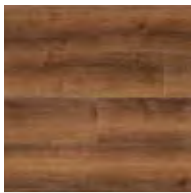
US2401 Chesapeake



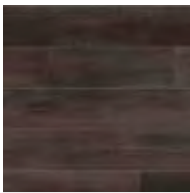
US2402 Galveston



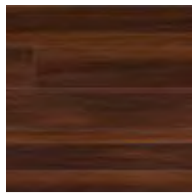
US2403 Copano



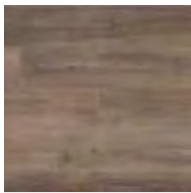
US2404 Monterey Oak



US2407 Bristol Oak



US2408 Biscayne Oak



US2416 Laguna Oak



US2418 Quincy Oak

Specifications

Pack Size: 2.78m²

Board Size: 1520x183x5mm

Board per Pack: 10

This collection offers unique and innovative visuals on a vinyl that enhances durability. The rigid core features special top/bottom layers for stability and is made from a high-density composition for extra rigidity, providing superior impact and dent resistance.

This series is recommended for both commercial and residential use, and can be installed in high-moisture and high-traffic areas.



US2418 Quincy Oak



US2403 Copano

WOOD EFFECTS ESSENTIALS



Wood Effects Essentials is an excellent and budget friendly flooring option, available in 11 stunning colours. This environmentally friendly laminate flooring offers exceptional durability to endure daily wear and tear, ensuring it remains a long lasting choice for any home.

It's easy maintenance features make it a practical and hygienic solution for busy families.

With dimensions of 1215mm in length, 197mm in width, and a thickness of 0.55mm, it features a bevelled edge that provides the look and feel of natural timber.

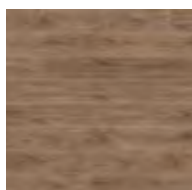
Colours



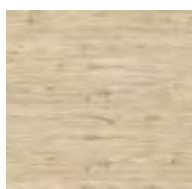
DR1204 Coast Stone



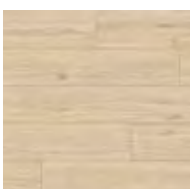
DR1244 Dune Beige



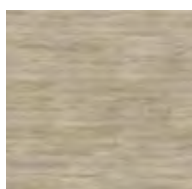
DR1210 Mangrove



DR1218 Natural Oak



DR1245 Pathway Oak



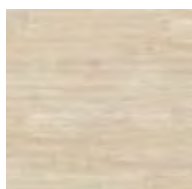
DR1227 Pebble Grey



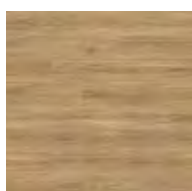
DR1248 Salt Taupe



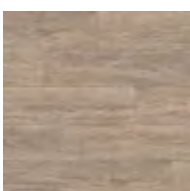
DR1242 Seashell Oak



DR1214 Shoreline



DR1261 Spotted Gum



DR1253 Tidal Brown



DR1218 Natural Oak



DR1253 Tidal Brown

STANDARD CARPETS

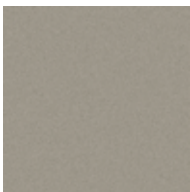


Saturn

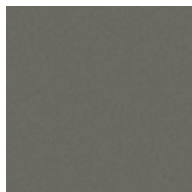
Saturn is a cut pile carpet would make a good option for those seeking a comfortable, durable, and stylish carpet. Polyester cut pile carpet is a type of carpet made from polyester fibre that has been cut to create a smooth, even surface.



SC2521 Dust



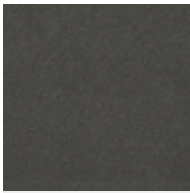
SC2542 Portal



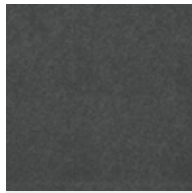
SC2576 Moon Dust



SC2582 Meteor



SC2583 Space Rock



SC2584 Dark Star



SC2597 Moonlight



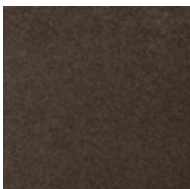
SC2583 Space Rock

Beach Isle

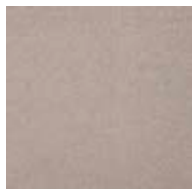
Beach Isle is a beautiful solution dyed polyester cut pile carpet that is ideal for any room in your home. It is an affordable carpet that offers a combination of colour, warmth, comfort, and style. Beach Isle is made with a high twisted yarn that creates a cut pile twist style with a textured appearance.



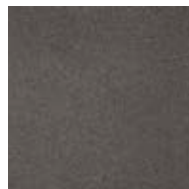
SC5045 Bermuda



SC5048 Oahu



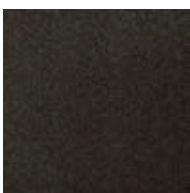
SC5071 Aruba



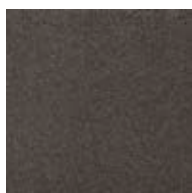
SC5074 Seven Miles



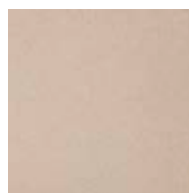
SC5075 Parrot Bay



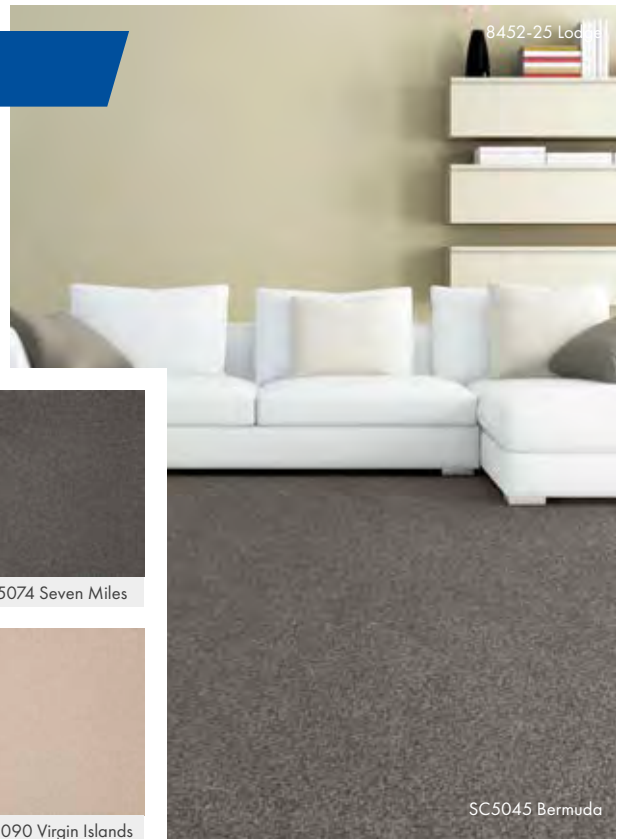
SC5077 Maldives



SC5078 St Barts



SC5090 Virgin Islands

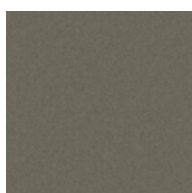
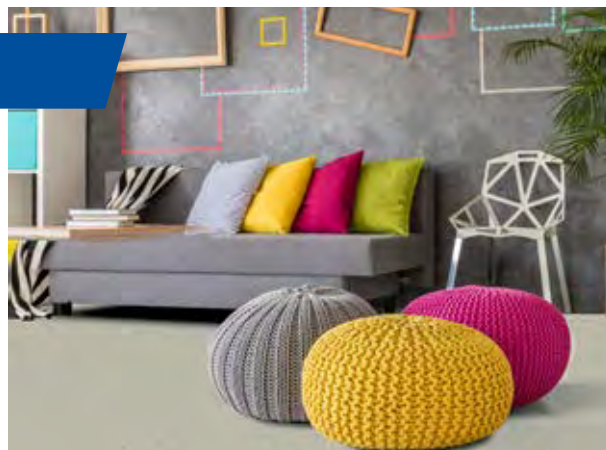


SC5045 Bermuda

Aspen

Aspen is a newly introduced cut pile carpet at Carpet Call, crafted from solution dyed nylon and UV treated for enhanced durability. It is an ideal choice for a busy home, offering a stylish and resilient flooring solution.

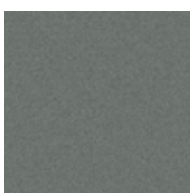
Available in a great range of 10 colours, Aspen also comes with a 20 year stain warranty, ensuring long lasting performance and peace of mind.



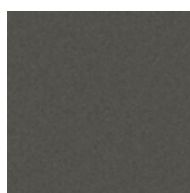
SC7545 Revolutionary Rd



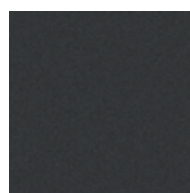
SC7570 Spring Creek



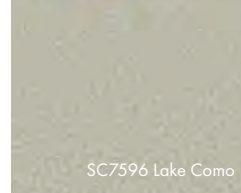
SC7571 Elevation



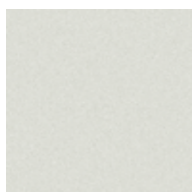
SC7572 Passion Fruit



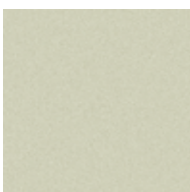
SC7579 Sundance Park



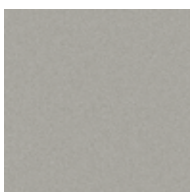
SC7596 Lake Como



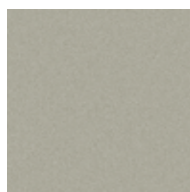
SC7590 Cedar Park



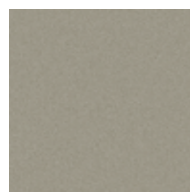
SC7592 Country Birch



SC7594 Orchid Drive



SC7596 Lake Como



SC7598 Terrace View

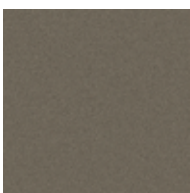
Dundee

Dundee is a premium cut pile carpet at Carpet Call, designed for durability and style. Made from solution dyed nylon and UV treated, it is resistant to fading and wear, making it an excellent choice for busy households.

Available in a versatile range of 9 colours, Dundee offers both comfort and longevity. Backed by a 10 year stain and wear warranty, this carpet provides lasting performance and peace of mind for your home.



SC5640 Southridge



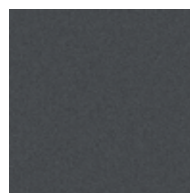
SC5645 Gothik



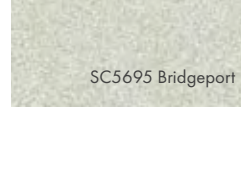
SC5646 Cameron



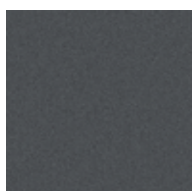
SC5670 Fairway



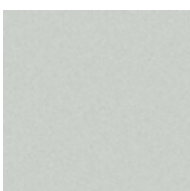
SC5675 Walsh



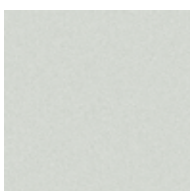
SC5695 Bridgeport



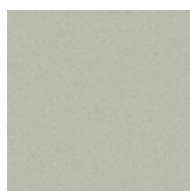
SC5676 Victory



SC5694 Lucknow



SC5695 Bridgeport



SC5696 Newlands

VICTORIA CARPETS



Wolseley Road

Wolseley Road Carpet is a luxurious 100% wool carpet, designed to bring comfort and elegance to your home. Its long lasting durability ensures peace of mind for years to come.



8180-09 Zen Garden



8180-13 Winterglow



8180-15 Dalgona



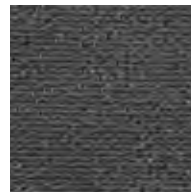
8180-34 Sakura



8180-53 Speckled Egg



8180-55 Dapple



8180-57 Night Market



8180-15 Dalgona

Dovedale

Dovedale Carpet is a premium 100% wool loop pile carpet, offering a combination of natural beauty and resilience. Its durability and quality make it an excellent choice for any home.



8452-25 Lodge



8452-31 Rowan Tree



8452-42 Kiln



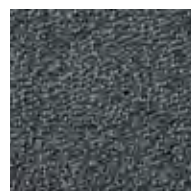
8452-43 Rockface



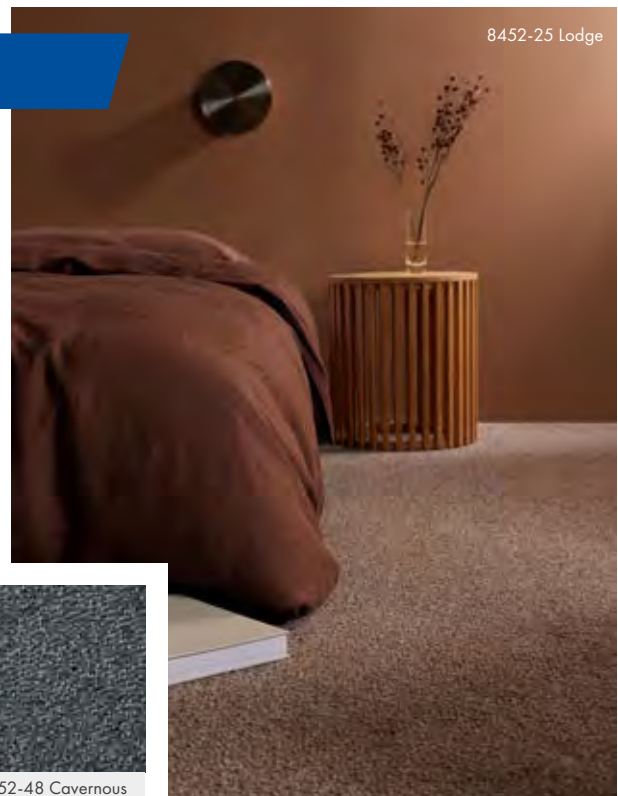
8452-46 Glasshouse



8452-47 River Stones



8452-48 Cavernous

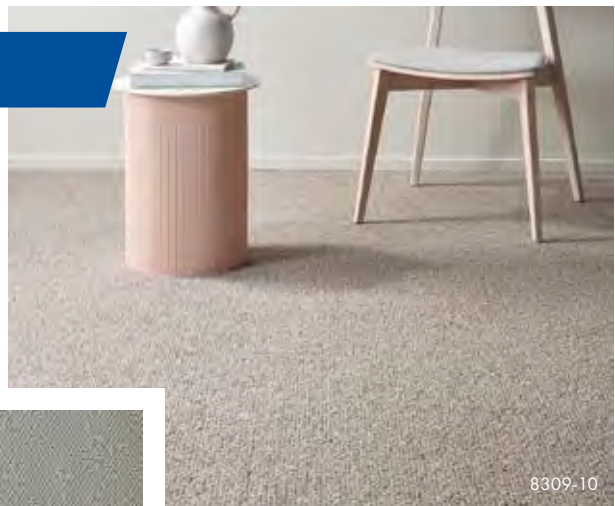


8452-25 Lodge

Caversham

Caversham Carpet is a high quality 100% wool textured loop pile carpet, designed to add both style and comfort to your living space.

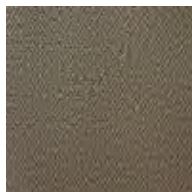
Its long lasting performance and reliability make it a perfect addition to any home.



8309-10



8309-13



8309-19



8309-20



8309-21



8309-23



8309-24

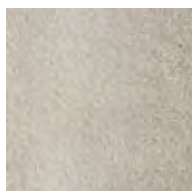
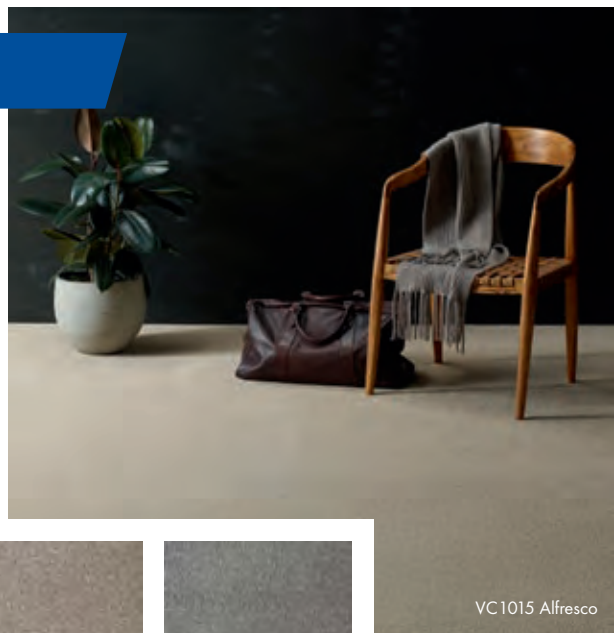


8309-25

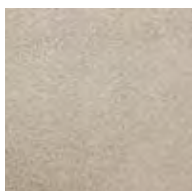
Melfi

Melfi is a brand new twist pile carpet at Carpet Call, designed for durability and long term performance. Made from stain proof fibre and UV treated, it offers exceptional resistance to fading, making it an ideal choice for busy homes.

Available in a stylish range of 9 colours, Melfi combines comfort, resilience, and elegance. With its outstanding durability and warranties, Melfi is a smart and stylish investment for any home.



VC1010 Ivory



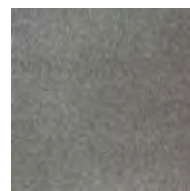
VC1015 Alfresco



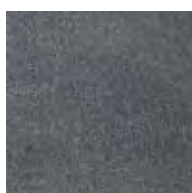
VC1017 Amber



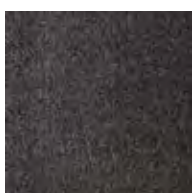
VC1035 Imperial



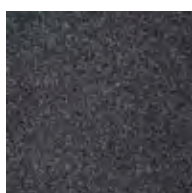
VC1050 Pottery



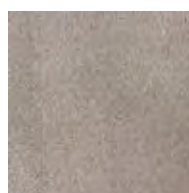
VC1052 Baroque



VC1053 Tectonic



VC1054 Vulture



VC1025 Chestnut

PLANTATION SHUTTERS

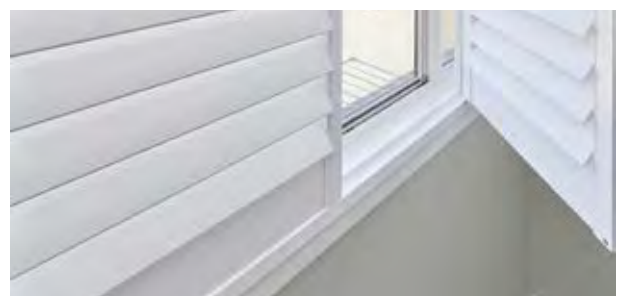


From
\$275
Per Sq. Mt.



Carpet Call is thrilled to announce our “Don’t Break the Bank” stock clearance event! Explore our extensive collection of high-quality home decor options now available at unbeatable prices. From luxurious carpets to elegant hardwoods, we offer a wide range of products to suit every style and budget.

Transform your living spaces with our stunning plantation shutters, starting at just \$275 per square metre. These timeless window treatments add charm and sophistication to any room while providing privacy and light control. Don’t miss this incredible opportunity to enhance your home with premium plantation shutters at discounted prices, only at Carpet Call!



AUSTRALIA MADE BLINDS



Discover top quality Australian-made blinds by shopping online, in store, or at home.

Blinds have the power to instantly transform the ambiance of any room, making them an attractive and essential addition to your interior spaces. At Carpet Call Mega Blinds, you'll find an affordable range of blinds crafted from the best materials, offering durability, longevity, UV protection, comfort, and more. Browse our blinds online or book a free in home consultation today.



CURTAINS



Carpet Call's curtains are proudly made locally, ensuring exceptional quality and custom made to suit your home.



OUTDOOR AWNINGS

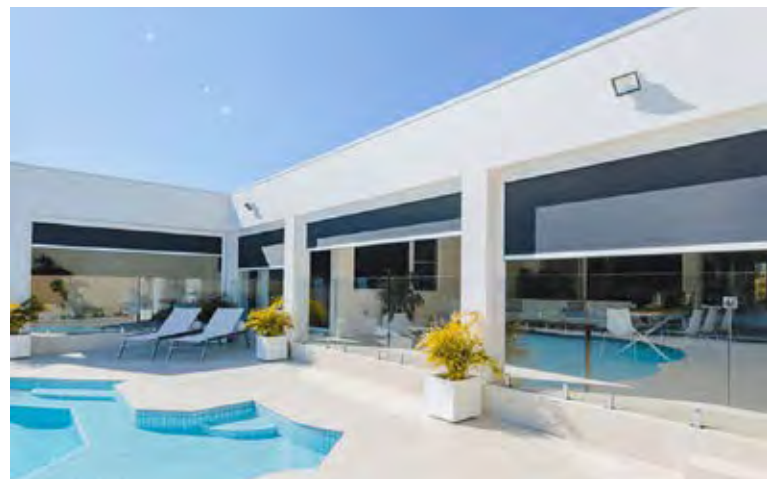
Zipscreen gives you privacy and year-round protection as well as keeping you safe from the elements and insects. Utilising stainless steel hardware and a premium aluminium cassette, experience true relaxation and comfortable entertainment without the time-consuming stress and cost of traditional renovations.

Manufactured from high-quality aluminium featuring a modern, square profile.

Versatile installation options offering either a full/semi-enclosed cassette or fascia configuration.

Ultra-Lock is a hidden locking mechanism that integrates into the side channel of the system.

Zip-guided system ensures zero gaps between the fabric and channel while ensuring an effortless operation.



RUGS

Caravan

Introducing the modern and luxurious Caravan range, designed to make a bold statement with its vivid and rich colour palette. This collection combines contemporary style with a touch of luxury, creating a sophisticated focal point in any home.

Crafted from high-quality materials, the Caravan range ensures exceptional durability and long lasting beauty. Its stain resistant properties make it an ideal choice for households with children or pets.

Experience the perfect blend of style, comfort, and practicality with the Caravan range, and transform your living space into a haven of relaxation and elegance.

MODERN



Yarn Type	Manufacturing	Care Instructions	Sizes
Polyester	Machine	Professional Dry Cleaning recommended on a regular basis to keep in the best possible condition over a long period of time.	120cm x 170cm 160cm x 230cm 200cm x 290cm 240cm x 330cm 280cm x 390cm

Colours



CVN.1750.15



CVN.1750.45



CVN.2061.45



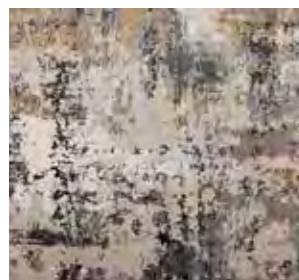
CVN.5530.08



CVN.5560.55



CVN.5561.45



CVN.5570.45

Empire

Discover our Empire rug collection, expertly crafted in Turkey to transform your space with its chic and modern designs. The neutral colour palette ensures timeless versatility, effortlessly complementing any interior style.

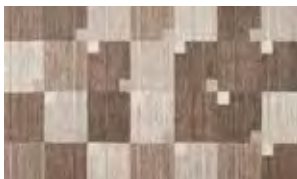
Boasting a plush 20mm pile height, the Empire range delivers a luxurious and soft feel underfoot, adding an element of sophistication and comfort to your home

Available in a variety of sizes and colours, the Empire collection is designed to suit the unique style and size requirements of your space.

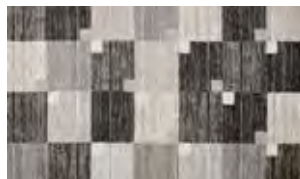


Yarn Type	Manufacturing	Care Instructions	Sizes
Polypropylene	Machine Made	Regular vacuuming required. Do not use power or rotary head vacuum cleaners. Professional cleaning recommended. Any spills should be blotted up immediately. Keep out of direct sunlight.	120cm x 170cm 160cm x 230cm 200cm x 290cm 300cm x 400cm 300cm x 400cm 80cm x 300cm

Colours



EMP.2888.45



EMP.2888.65



EMP.2899.10



EMP.2899.45



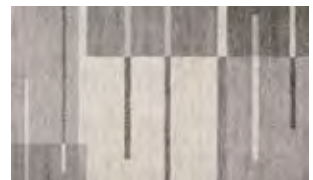
EMP.2899.57



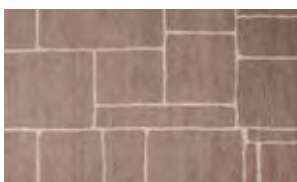
EMP.2899.65



EMP.2900.45



EMP.2900.55



EMP.2922.45



EMP.2922.55

Julian

The modern Julian rug features UV protection for colour fastness, making it perfect for both indoor and outdoor use.

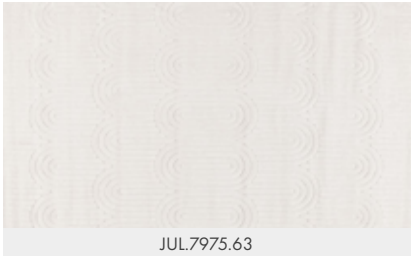
Crafted from polypropylene fibres, it's an excellent choice for pet owners, as it is easy to clean and its durable material withstands the wear and tear caused by pets.

Designed for everyday use, this rug is easy to vacuum, and its non-shedding construction ensures low maintenance, making it ideal for busy households.



Yarn Type	Manufacturing	Care Instructions	Sizes
Polypropylene	Machine	Professional dry cleaning recommended on a regular basis, to keep it in the best possible condition over a long period of time.	120cm x 170cm 160cm x 230cm 200cm x 290cm 240cm x 330cm 80cm x 300cm

Colours



FREE
measure and
shop at home
service



Exclusive HOME SHOW OFFER



FREE CARPET UNDERLAY UPGRADE

Visit Carpet Call at the Home Show

Stand Number R17 Brisbane Convention & Exhibition Centre

Dates: 19th – 21st September 2025

Enjoy a FREE carpet underlay upgrade when you purchase carpet at the Home Show — or through an appointment booked at the event!



Offer valid for orders placed at the Home Show only. Cannot be combined with any other offer. Condition apply.

Flooring Excellence

Wide selection of quality flooring options, including carpets, laminates, and vinyl.



Window Covering Expertise

Comprehensive range of blinds, curtains and shutters to enhance your windows with style and functionality.



Rugs and Accessories

Diverse collection of rugs and accessories to complement and accentuate your living spaces.



Outdoor Bliss

Explore outdoor blinds and shutters, seamlessly integrating indoor and outdoor aesthetics.



Complete Home Transformation

A holistic destination for all your interior and exterior design needs, ensuring a cohesive and stylish home.



carpetCALL
FLOOR CENTRE

**YOUR ONE-STOP
SOLUTION**

Thank you
**to our sponsors for their
continued support**



“ Home is not a
place, it is
a feeling!”



***carpet*CALL**
F L O O R C E N T R E

13 23 23
carpetcall.com.au



Scan me