



Waterproof wall panels and tiles

with tongue and groove

949 Calcatta



B07 Siracusa

What is Dumawall?

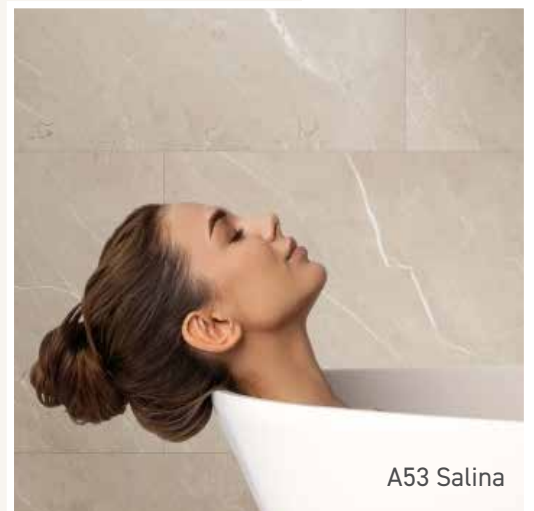
Dumawall is 100% waterproof wall cladding with an innovative tongue-and-groove installation method. Dumawall's solid, UV-resistant tiles and wall panels provide a stylish and durable finish for your interior. Whether you choose a compact tile or an XL panel, Dumawall offers various sizes and modern finishes such as concrete look or marble texture.

Manufactured by Dumaplast in Maldegem (Belgium) with patented RCB[®] technology, Dumawall guarantees quality, durability, and easy installation. Perfect for bathrooms, kitchens, or any space where style and functionality come together.

- No grout, no mess
- Tongue & groove connection
- Easy DIY – no special tools
- Install over existing tiles
- 100% waterproof & durable
- Install and use same day
- Low-maintenance
- 15-year warranty



B59 Evora Gloss



A53 Salina



No dirty grout lines



Quick installation



Easy connection



UV resistant

Discover the Range

Let us inspire you!



868 Light Cement
65 x 37.5 cm



911 Chicago
65 x 37.5 cm



C42 Travertino
65 x 37.5 cm



A93 Corleone
65 x 37.5 cm



B07 Siracusa
65 x 37.5 cm



A53 Salina
65 x 37.5 cm



B59 Evora GLOSS
65 x 37.5 cm



B29 Trapani GLOSS
65 x 37.5 cm



Size Information

65 x 37.5cm x 5mm | 1.95m² | 8 Tiles per pack



Waterproof



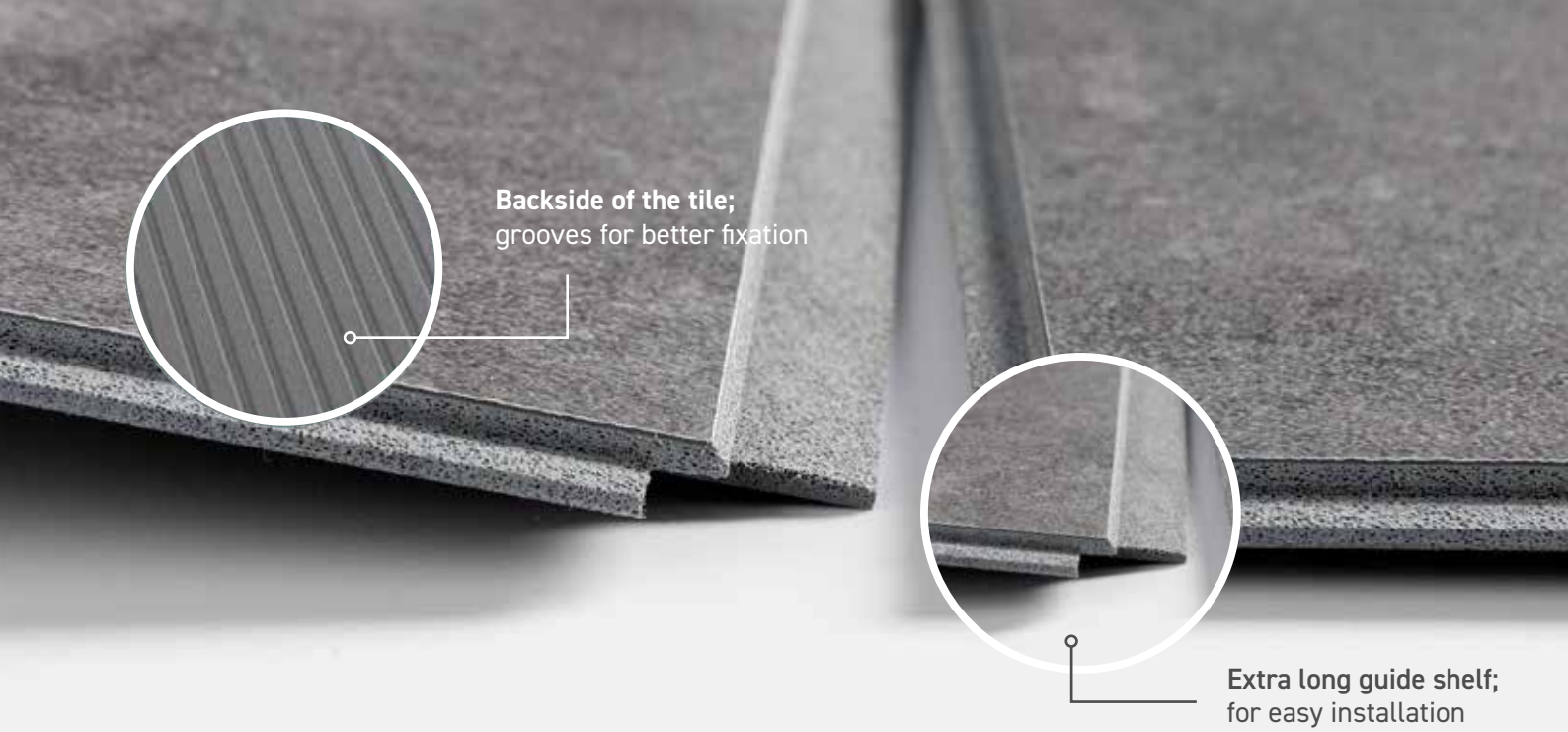
Easy size



Easy cover



Adhesive Application



Backside of the tile;
grooves for better fixation

Extra long guide shelf;
for easy installation

Easy to cut, DIY install

Renovating without stress. Installing Dumawall is quick and easy. Our wall panels can be installed directly onto existing wallcoverings (including tiles). Dumawall provides the look of traditional tiles featuring a simple interlocking tongue & groove connection. The quick installation means you'll finish up to three times faster than with traditional tiles. You can easily cut the tiles and panels to size with a regular utility knife or your preferred cutting tool providing the ideal DIY tiling solution.

	Ceramic tiles	Dumawall
Fast and easy installation		✓
Clean work		✓
Washable	✓	✓
Colourfast	✓	✓
Budget friendly		✓
Easy maintenance		✓
No dirty grouting		✓
Light material		✓
Hygienic	✓	✓
East to cut		✓

RCB® base panel
patented Rigid Core
Board technology



**RCB® extra Coex adhesion
layer for wet rooms**
patented Rigid Core
Board technology

