



RECYCLABILITY

One of the top priorities and the most asked question at the Open Day in 2023 was about recycling and recycled content.

What happens to samples?

Samples are part of our recycling solution as they are made primarily from offcuts and seconds. Customers can return samples to the distributor, and we are working on other return routes.

Is there a facility to recycle offcuts?

When we design an installation, we make sure that the design minimises any waste. Any offcuts that do exist can be offered to Men's Sheds, who use them in their projects - <https://menssheds.org.uk>



Lots of our installers use offcuts to create stunning features such as planters, water features or bird tables - <https://www.millboard.com/en-gb/blog/our-favourite-alternative-uses>

What happens to boards at End of Life?

We have a dedicated team working on our circular economy model – looking at reuse and recycle throughout the lifecycle of Millboard. Current projects include creating new products from manufacturing dust recycling used boards.

MAKING MILLBOARD

How much recycled material is in Millboard boards?

Over a third of every board is made from certified recycled stone. The Millboard of the Future Innovation team is working on a project to increase the use of recycled material without compromising on our trademark quality and aesthetic.

Do you use renewable energy in your production process?

Yes. All of the electricity that powers our machines is 100% certified renewable, and we are exploring onsite renewables for our Ryton plant.

Any recommendations for our own sustainability journey?

Most universities and local authorities offer free or discounted training and advice. In the Midlands, SWM is a good place to start and there is also advice available from West Midlands Growth Hub.

CERTIFICATIONS

We are a Living Wage Employer, have been awarded the Fair Tax Mark, are ISO 9001 (quality), 14001 (Environment), 45001 (Health & Safety) accredited, and have obtained Environmental Product Declarations (EPDs).

We are signed up to the United Nations Global Compact, West Midlands Net Zero Pledge and align our sustainability strategy to the United Nations Sustainable Development Goals.

We are looking at what other certification is most relevant to us and our customers, both in the UK and throughout other geographies including for example LEED and BREEAM.

Environmental Product Declaration and Life Cycle Assessments

Just 12 months after committing to them, we obtained our first EPD. Using what we learnt, we are carrying out Life Cycle Analysis to understand the true impact of our products and to identify how to improve it.



millboard
Live. Life. Outside.

The Millboard Company Ltd
Head Office, 1 Argosy Court, Scimitar Way, Coventry CV3 4GA
T: +44 (0)24 7643 9943 E: enquiries@millboard.co.uk www.millboard.com

Edition: Dec 2024 v1.0



millboard
Live. Life. Outside.

sustainability
west midlands

Sustainability at Millboard

WHO?

...manages sustainability at Millboard?

Millboard has established a cross business Sustainability Committee with Board level sponsorship and works collaboratively with subject matter experts at Sustainability West Midlands, who help guide us on our journey.

WHAT?

...are we focusing on?

At the end of 2023 we carried out a materiality exercise to understand what the priorities were not just for Millboard but our employees and other stakeholders. We used this information to review and update our sustainability plan.

WHY?

...is sustainability important to Millboard?

We have a clear vision and set of values that drive our business. Underpinning both of those is our core belief that successful business shouldn't come at the expense of the environment or doing the right thing for our people and wider communities.

SUSTAINABILITY 101

WHAT IS SUSTAINABILITY OR ESG? | WHY IS IT IMPORTANT?
WHAT WE HAVE BEEN DOING | CERTIFICATIONS | RECYCLABILITY
MAKING MILLBOARD | WHAT ARE WE ARE WE FOCUSING ON?

UK



This guide covers some frequently asked questions (FAQs) about Millboard and our approach to sustainability. If there's anything not covered, or you would like more information please contact sustainability@millboard.com

WHAT IS SUSTAINABILITY OR ESG?

These two words are similar but slightly different. Both refer to 3 areas - Environment, Social or People and Governance.

ESG tends to refer to a framework that measures an organisation's performance against the three areas and how transparent and accountable it is.

Sustainability has a more holistic and wide-ranging focus and refers to how you run a business ethically and in a way that meets the economic, social and environmental needs of the present without compromising the ability of future generations to meet their own needs. This will deliver value and benefit to all stakeholders.



Environmental
Your impact on the world.



Social
Your contribution to your communities.



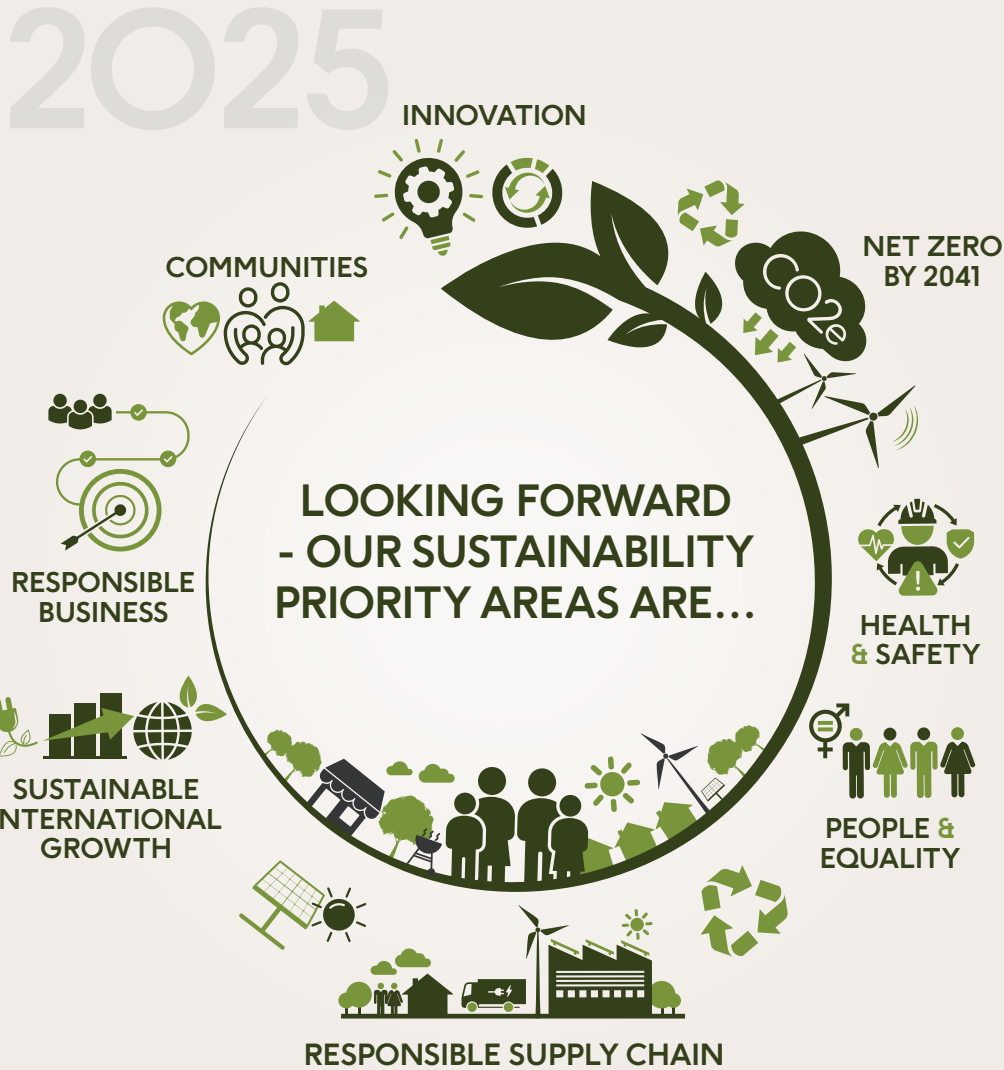
Governance
How you conduct yourself.

FAQs



In the last 12 months we have:

- ✓ Calculated our Carbon Footprint.
- ✓ Reduced scope 2 carbon by 80%.
- ✓ Obtained our first Environmental Product Declarations .
- ✓ Set up Millboard of the Future.
- ✓ Submitted our first UN Global Compact Communication of Progress.
- ✓ Stopped using single use plastic cups.
- ✓ Deepened our relationship with Men's Sheds.
- ✓ Continued to support local charities and good causes.
- ✓ Were finalists at MX Manufacturing Awards.



...& BEYOND

Get in touch | sustainability@millboard.co.uk