

**OXXIGEN** NEXT GENERATION VENTILATION



**GERMAN  
DESIGN  
AWARD  
WINNER  
2024**

Every home deserves  
24/7 fresh air and a  
healthy indoor  
environment.

That's why we are passionate  
about quality ventilation via  
decentralised mechanical  
ventilation units with heat  
recovery.

Let us introduce you to the  
many benefits of simple, yet  
reliable ventilation and no  
doubt many will also resonate  
with you.

[www.oxxygen.com.au](http://www.oxxygen.com.au)



24/7 fresh, filtered and  
preconditioned outdoor  
air despite windows  
closed, offering an  
additional level of:

- Security
- Silence
- Thermal comfort
- Air change rate
- Energy efficiency



Being able to keep  
windows closed without  
sacrificing high levels of  
fresh air, these units  
decrease:

- Condensation & mould growth
- Build-up of CO2 & odours
- Effects of hay fever
- Bugs & mozzies
- Dust



When compared to  
centralised (ducted)  
ventilation units, the  
decentralised units are:

- Cost effective
- Space efficient
- Easy wall installation, incl.  
in a retrofit scenario

**OXXIGEN** NEXT GENERATION VENTILATION



**OXXIGEN** NEXT GENERATION VENTILATION



**GERMAN  
DESIGN  
AWARD  
WINNER  
2024**

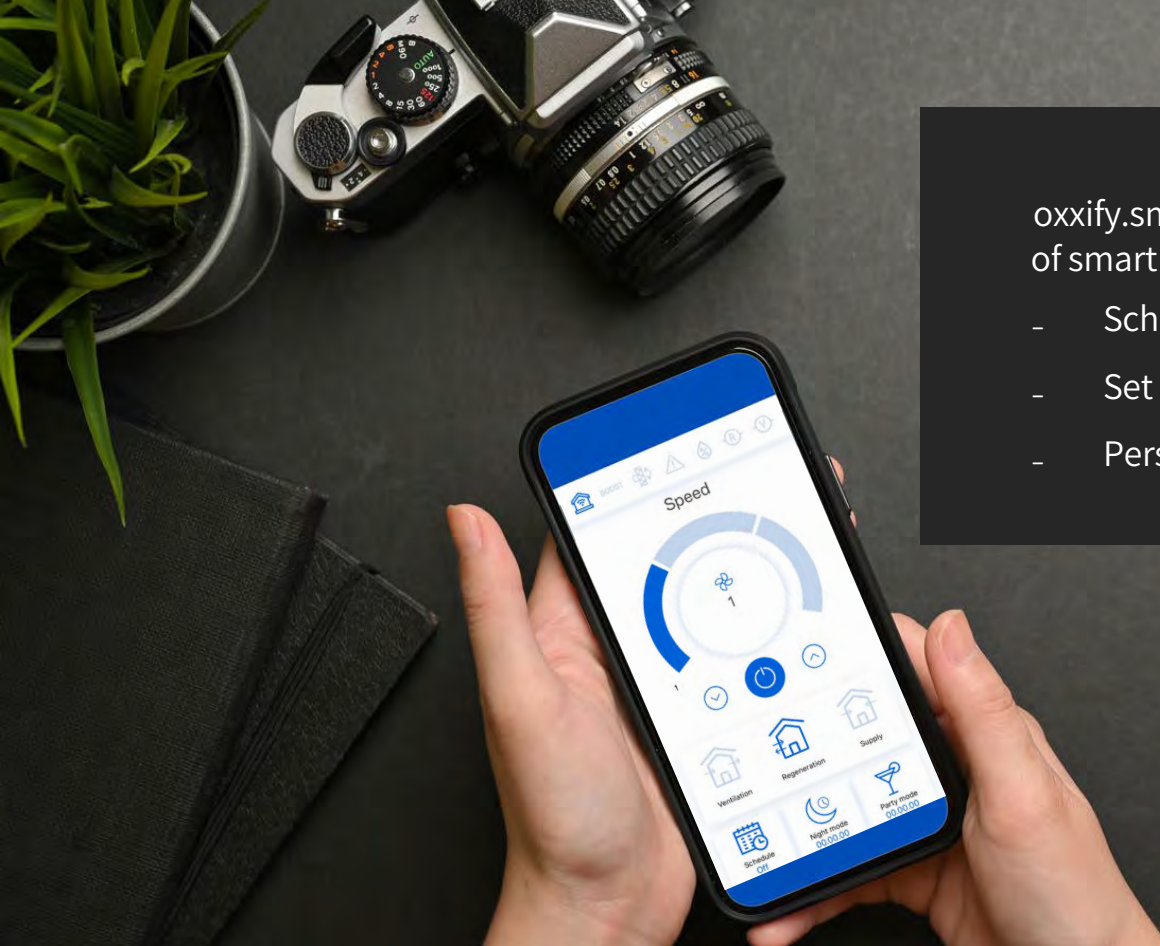
The Oxxify ventilation system brings a fresh breeze into your home.

With its clean and stylish design, it blends seamlessly into any interior and not only looks good but also does a great job.

It is made of high-quality materials and equipped with the latest technology to ensure optimal air quality. The Oxxify series offers a wide range of indoor and outdoor cover colours - up to you if you would like it to fit in or stand out!

[www.oxxygen.com.au](http://www.oxxygen.com.au)

Speed Levels	I	II	III
Model Nr.	141422-K Short version		
Supply voltage, V – 50/ 60 Hz	1~100 – 240		
Power consumption, W	1.7	2.6	5.3
Current consumption, A	0.02	0.03	0.06
Max. Airflow rate, m <sup>3</sup> /h	15	30	50
Filter	G3 + F7 (Optional)		
Noise, dB(A) (Sone)	11	18	20
Exterior noise insulation, dB(A)	42		
Max. heat recovery efficiency, %	90		
Length of ventilation pipe	240 mm – 500 mm		
Warranty	2 years		
Interior panel	white   opt. softshell colours		
Exterior Cover	white   opt. anthracite or brushed stainless steel		
Functions	Humidity Sensor   App   Remote control   Auto closing damper		



oxxify.smart - offering a range of smart controls:

- Schedules
- Set points
- Personalised airflow



**OXXIGEN** NEXT GENERATION VENTILATION



**GERMAN  
DESIGN  
AWARD  
WINNER  
2024**

# Smart controls

CUSTOMISE YOUR VENTILATION EXPERIENCE

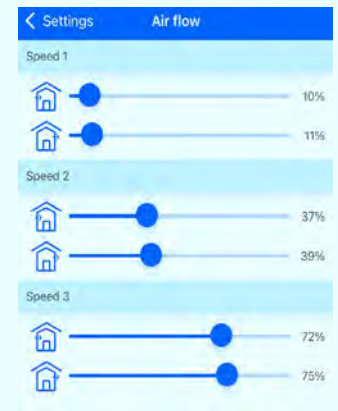
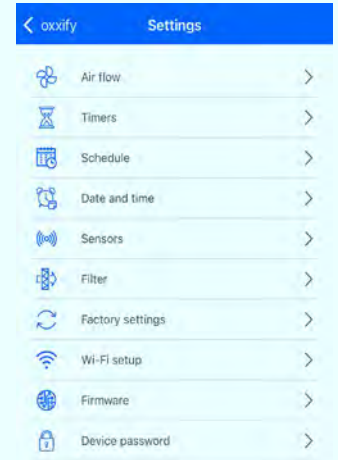
The oxlify.smart offers three different control options:

(1) directly at the unit,  
(2) via a remote control, and  
(3) a mobile app - providing a user-friendly interface that lets you customise and adjust a range of controls to suit your preferred home ventilation experience.

[www.oxxygen.com.au](http://www.oxxygen.com.au)

## App controls:

- **Home Page** - Providing a quick overview and ability to toggle between different modes.
- **Settings** - Providing the ability to switch between different controls and set up functions.
- **Air Flow** - Ability to customise airflow rates for the three different speed levels.
- **Timers** - Providing the ability to set a regular schedule, such as the Night Timer (8h of speed level 1), Party Mode (4h of speed level 3), and Boost (custom timer).
- **Schedule** - Providing the ability to pre-set different speed levels throughout the day and week.
- **Sensors** - Determining the humidity sensor threshold which activates the boost mode. Also enabling the activation of custom sensors which could be installed to activate the boost function (e.g. light switch).
- **Filter** - Ability to not only adjust the filter timer setpoint but to also check in on time left to filter maintenance.





**OXXIGEN** NEXT GENERATION VENTILATION



**GERMAN  
DESIGN  
AWARD  
WINNER  
2024**

# There is more!

PERSONALISE YOUR VENTILATION EXPERIENCE

The Oxxify series offers award-winning design and a range of accessories.

Whether you dare to stand out, or you prefer the oxxify.smart to fit in – we have you covered with a large range of interior soft shield colours and different exterior covers.

Slim wall buildup of approx. 100mm?  
Prefer an F7 filter for extra clean air?  
No problem, we offer quality filters and an extension hood from Siku!

[www.oxxygen.com.au](http://www.oxxygen.com.au)



Example: Interior soft shield colours



**OXXIGEN** NEXT GENERATION VENTILATION



**GERMAN  
DESIGN  
AWARD  
WINNER  
2024**

For energy efficiency and occupant health reasons, NCC 2022 introduced new ventilation requirements \*

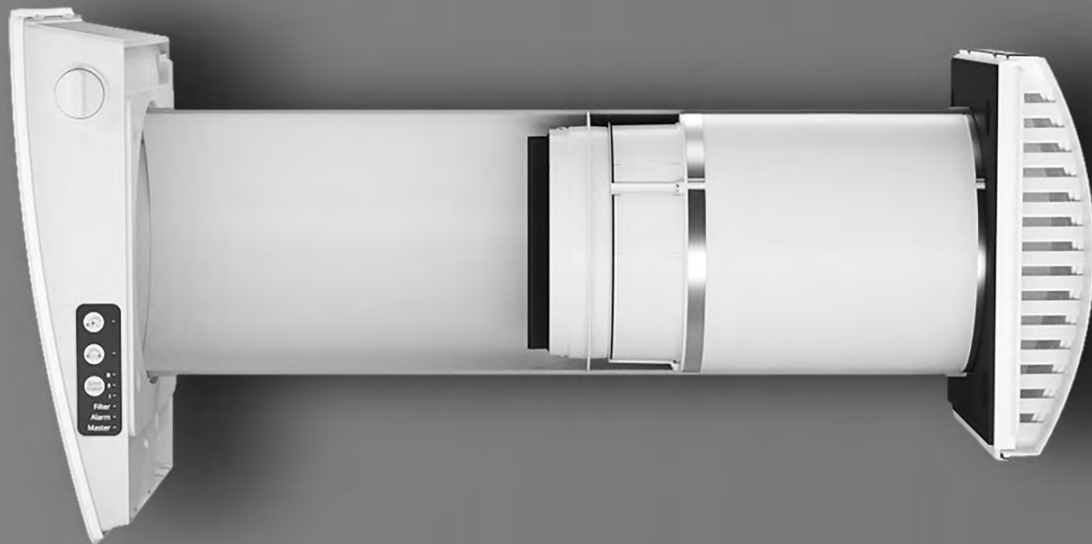
Verification methods H6V3 and J1V4 outline the continuous airflow requirement for homes. Our online calculator helps establish how many Oxxigen units are required to comply; depending on a home's footprint (sqm) and number of bedrooms.

[www.oxxygen.com.au](http://www.oxxygen.com.au)

How many decentralized ventilation units to install?

SQM Home	Number of bedrooms				
	1	2	3	4	5
50	2	2			
100		2	3		
150		3	4	5	
200			4	5	5
250			5	5	5
300			5	6	7

\*when an air change rate of less than 5m<sup>3</sup>/m<sup>2</sup>.hr at 50 Pa reference pressure is achieved. (approx. 5 air changes)



**OXXIGEN** NEXT GENERATION VENTILATION



**GERMAN  
DESIGN  
AWARD  
WINNER  
2024**

# Installation IT JUST WORKS

Easy installation is just one of the many advantages of the Oxxify series. Our website and manuals describe every individual step.

Electrical hardwiring must be carried out by a certified electrician; however, all remaining steps can be completed as a DIY task—comparable to installing any other wall-mounted fan. No expert commissioning is required. These ventilation units fully embrace a plug-and-play design philosophy, ensuring reliable operation straight out of the box – it just works.

[www.oxxygen.com.au](http://www.oxxygen.com.au)

Example installation; weatherboard wall



**Step 1**  
Align holes in external and internal walls.



**Step 2**  
Insert PVC pipe and fasten internal cover.



**Step 3**  
Install external wall plate; the extension hood is recommended for thin walls (less than 240mm).



**Step 4**  
Remainder of external hood is fastened.



**Step 5**  
Push heat recovery and fan cartridge into PVC pipe (photo w.o. filter) for final wiring and connection.



**Step 6**  
Finished result of our sample weatherboard wall. The oxxify.smart is now controlled via app, remote control, and buttons on the unit.