

**VICOSTONE**  
ECO SURFACES



# CRYSTALLINE

SILICA-FREE SURFACES



[www.vicostone.com.au](http://www.vicostone.com.au)



NEW DESIGNS

*Defining* YOUR  
SUSTAINABILITY





## *Our Story*

Inspired by the timeless myth of King Pygmalion and Galathea, in which stone was transformed by a kiss into vibrant life, VICOSTONE® embarks on the same journey of passion. Since 2002, we have infused each of our work with passion, elevating nature's finest elements - marble's elegance, granite's boldness, and Earth's wonders - into living works of art. Through cutting-edge technology, we immortalized these aspects of nature, crafting surfaces that transcend stone to tell unique, captivating stories.

Today, we're dedicated not just to beauty but also sustainability, ensuring our surfaces protect the environment for future generations. At VICOSTONE®, we believe that creating with purpose and passion is the way forward - transforming the spaces we live in while protecting the world we live on.



# DEFINING *Your* SUSTAINABILITY

VICOSTONE® proudly introduces a new product line that marks a major leap forward in sustainability and innovation. Crafted through extensive research and development, these surfaces are CRYSTALLINE SILICA-FREE, setting a new standard for safety and environmental responsibility. Committed to protecting the planet and enhancing humanity's well-being, VICOSTONE® is leading the way with renewable energy, 100% recycled wastewater, and eco-friendly, recycled materials. This is our pledge to a cleaner, healthier future.

CRYSTALLINE SILICA-FREE (<1%)





## A New Era of Unique Designs

Our Crystalline Silica-Free Surfaces showcase distinctive patterns and textures that push the boundaries of conventional designs. Inspired by nature, each surface showcases exquisite patterns and textures, blending elegance and originality to elevate any space.

## Global Brand of Excellence

As a trusted name among the world's premier surface manufacturers, VICOSTONE® continues to lead through innovation and unique designs. Our unmatched quality has earned us the trust of customers, architects, and interior designers across more than 50 countries, including demanding markets like the United States, Canada, and Europe.



# Versatility

## in Every Dimension

Understanding that every project is unique, our Crystalline Silica-Free Surfaces come in an extensive range of sizes. We can also offer **super jumbo size** – the biggest size in the market to ensure that whether you're working on a boutique residential project or a large-scale commercial development, you'll find the perfect dimensions to realize your design ambitions.

## Redefining Excellence in Surface Innovation

Driven by Innovation, VICOSTONE® ECO Surfaces are manufactured using quality materials from **Breton S.p.A** named **BIOQUARTZ®**, on an exclusive, patented Breton S.p.A technology line. This commitment to cutting-edge advancements guarantees superior quality and sustainability in every slab.







# Transform Your *Space*

With VICOSTONE® Crystalline Silica-Free Surfaces, enjoy not just stunning aesthetics but also the peace of mind that comes with healthier, superior and sustainable materials.





## Exotic Collection

The dynamic colours and patterns of our Exotic Collection exude a luxurious and regal atmosphere, perfect for the most discerning clientele.





# 1601 - Theia Perla

Exotic Collection



Theia Perla by VICOSTONE® exudes the comforting warmth of the winter sun, featuring a soft white background infused with warm undertones. Its long, delicate veins flow gracefully across the surface, reminiscent of sunlight filtering through frosty air.



# 1602 - Solasta

Exotic Collection



The Solasta by VICOSTONE® captures the ethereal beauty of drifting clouds, featuring a warm white background that evokes a sense of serenity and lightness. Its bright white veins flow gracefully across the surface, resembling wispy clouds softly illuminated by the sun.





# 1603 - Fulgento

Exotic Collection



Fulgento by VICOSTONE® is inspired by the rugged surface of the moon, where time and nature shape its ethereal beauty. Its warm beige base is accented by subtle diagonal striations, mimicking weathered rock formations and lunar landscapes. This design brings a sense of mystery and timeless elegance, perfect for creating spaces that embrace both strength and serenity.



# 1604 - Labradio

Exotic Collection



Labradio by VICOSTONE® carries within itself the magical interplay of sunlight filtering through forest leaves, capturing the essence of light and shadow dancing together in nature. Its soft green-gray background is delicately accented with white, tree-like veins that mimic rays of sunlight breaking through the canopy.





## 1605 - Inara

Exotic Collection



Inara by VICOSTONE® is inspired by the timeless elegance of natural Calacatta stone. Its striking combination of large and small veins runs across the entire surface, creating a dynamic visual effect that enhances the depth and sophistication of the design.



# 1606 - Idalie

Exotic Collection



The Idalie by VICOSTONE® is inspired by the gentle glow of twilight reflecting on a river's surface, embodying the calm and mystery of dusk. With a soft white-gray background, this design features delicate, full-bodied veining that stretches across the surface like the subtle ripples of light on water.





## 1607 - Earthshine

Exotic Collection



Reflecting the captivating beauty of a starry night, this design showcased a deep background that reflects the cosmic elegance of celestial formations. Its intricate patterns evoke the shimmering light of stars scattered across the universe, creating a stunning visual effect that transforms any space.



## 1608 - Zyaire

Exotic Collection



Zyaire embodies the purity and movement of a flowing stream, with a pristine white background adorned by gray patterns. The delicate veining mimics the gentle currents of water, creating a sense of fluidity and tranquility.





# 1609 - Eirian

Exotic Collection



Eirian is inspired by the rugged cliffs along the coastline, where time and tides shape their majestic beauty. Bold gray veins flow across a warm gray background, mimicking the natural patterns of weathered stone.



# 1610 - Silas

Exotic Collection



Silas captures the dramatic contrast of the ever-changing sky during a storm. Dark and light tones blend seamlessly, mimicking the shifting shades of clouds as they gather and disperse. Dynamic veins streak across the surface, evoking the raw energy and movement of nature's most powerful moments.





# 1806 - Vilina

Exotic Collection



Vilina captures the serene beauty of a cloudy sky, where soft white-gray tones blend seamlessly with delicate beige and gray patterns. Its gentle hues and flowing textures evoke the calm and ever-changing essence of drifting clouds, bringing a sense of tranquility and harmony to any space.



# 1900 - Kennon

Exotic Collection



Kennon by VICOSTONE® is inspired by the strength and grandeur of towering mountains. Its warm beige background evokes a sense of ancient majesty, while subtle textures mimic the rugged, awe-inspiring beauty of high peaks. This design brings a bold and timeless elegance, perfect for spaces that embody power and magnificence.





# 1901 - Danica

Exotic Collection



Danica by VICOSTONE® is inspired by the pristine beauty of Cristallo Quartzite and frozen lakes. Its cool white-gray base, accented with delicate white veins, mirrors the serene, icy landscapes.



# 1904 - Anore

Exotic Collection



Anore by VICOSTONE® is inspired by the rich, nourishing flow of sediment-laden rivers, symbolizing fertility and vitality. Its warm, earthy tones are complemented by intricate patterns that evoke the movement of water and the abundance it brings.





# 1905 - Avani

Exotic Collection



Avani by VICOSTONE® is inspired by the powerful, relentless flow of rushing rivers. Its deep, earthy tones and dynamic patterns mirror the strength and movement of water carving its path through the landscape. This design brings a sense of vitality and energy, perfect for spaces that seek to capture the force and majesty of nature.





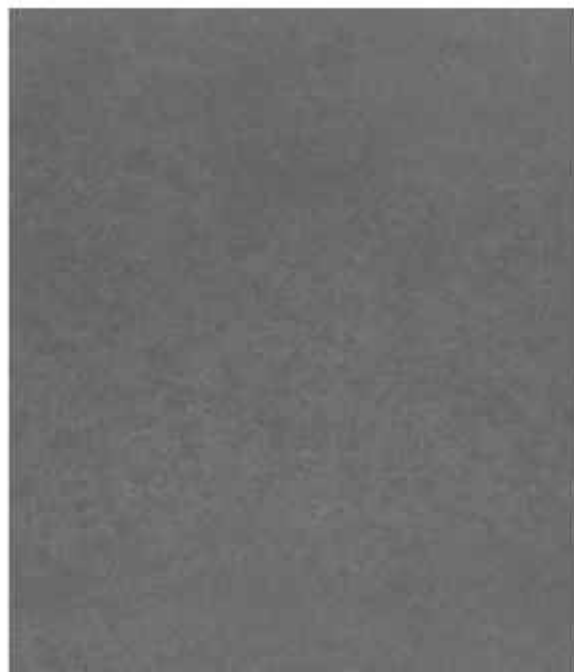
## Natural Collection

Aesthetic that evokes the dynamism of granite and elegance of marble will create the most sublime impression for creative and luxurious projects.





1706 - Brumous



1300 - Tenebris



1708 - Abalos



1301 - Prinus



1300 - Tenebris



**1710** - Helia



**1707** - Nerissa



**1802** - Asteria



**1801** - Asteria Gold



**1801** - Asteria Gold





**1800** - Seraphic



**1803** - Thorin



**1705** - Araceli



**1709** - Emaya



**1104** - Nazifa



**1600** - Oneiros



**1803** - Thorin



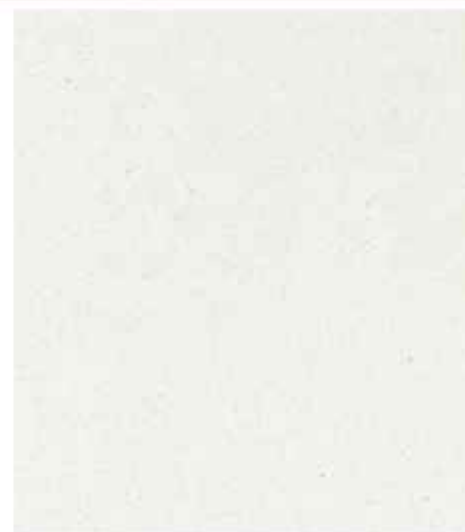
1802 - Asteria





## Classic Collection

Based on a monothematic melody of rock, this collection emphasize both classic and contemporary feelings. These designs possess a sophisticated and professional look that can be applied to any modern or traditional architecture projects.





**1700** - Zephyr



**1701** - Ilina



**1702** - Milou



**1103** - Koren



**1100** - Bardhyl



**1101** - Callum White



**1102** - Noctis



**1700** - Zephyr





1102 - Noctis

P : Polished H : Honed

## Our Collections

### EXOTIC COLLECTION



1601 Theia Perla P 1602 Solasta P 1603 Fulgento P 1604 Labradio P 1605 Inara P 1606 Idalie P 1607 Earthshine P



1608 Zyaire P 1610 Silas P 1609 Eirian P 1806 Villina P 1900 Kennon P 1901 Danica P 1904 Anore P 1905 Avani P

### NATURAL COLLECTION

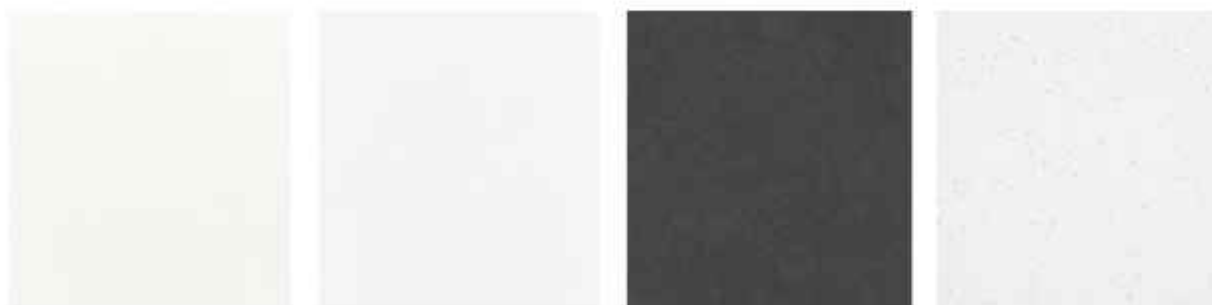


1300 Tenebris H 1301 Prinus H 1705 Araceli P 1706 Brumous P 1707 Nerissa P 1708 Abalos P 1709 Emaya P



1710 Hella P 1800 Seraphic P 1801 Astoria Gold P 1802 Asteria P 1803 Thorin P 1600 Oneiros P 1104 Nazifa H

### CLASSIC COLLECTION



1100 Bardhyl P 1101 Callum White P 1102 Noctis P 1103 Koren P



1700 Zephyr P 1701 Ilina P 1702 Milou P

The colours in this brochure are printed to the highest standards; however, they should be viewed as a representation and not an exact match of the actual product colour.



# Technical Specifications

NO	SPECIFICATIONS	TEST METHOD	VICOSTONE® ECO SURFACES
1	Water Absorption	ASTM C97/C97M-18	≤ 0.03%
		BS EN 14617-1:2013	≤ 0.03%
2	Apparent Density	ASTM C97/C97M-18	2.1 ÷ 2.3 g/cm³
		BS EN 14617-1:2013	2.1 ÷ 2.3 g/cm³
3	Flexural Strength	ASTM C880/C880M-24	≥ 57.8 MPa
		BS EN 14617-2:2016	≥ 70 MPa
4	Compressive Strength	ASTM C170/C170M-24a	Dry: ≥ 150 Mpa
		BS EN 14617-15:2005	Dry: ≥ 150 Mpa
5	Impact Resistance	ASTM C1870-18(2024)	36-inch ball drop: ≤ 0.25 in 48-inch ball drop: ≤ 0.27 in
		BS EN 14617-9:2005	> 8.33 J
6	Abrasion Resistance	ASTM C501-21	Abrasive Wear index: Iw 350 ÷ 500
		BS EN 14617-4:2012	Volume of chord: V ≤ 215 mm³ Chord length: l ≤ 29.5 mm
7	Mohs's Scratch Hardness	EN 101:1991	≥ 5
8	Thermal Shock Resistance	ASTM C484-20	No Visible damage after 10 cycles
		BS EN 14617-6:2012	No Visible defects after 20 cycles Change in mass: ≤ 0.05% Change in flexural strength: - 13.5% ÷ 5.9%
9	Dimension Stability	BS EN 14617-12:2012	Class A
10	Chemical Resistance	ASTM C650-20	Unaffected (Excluding: Potassium hydroxide, 100 g/L)
		BS EN 14617-10:2012	Hydrochloric acid: Class 4 Sodium hydroxide: Class 3
11	Stain Resistance	ASTM C1378-04(2019)	Not affected (Polished finish)
12	Microbial Resistance	ASTM D6329-98	Ranking 3: Resistant to Mold Growth

# Materials Comparison

MATERIALS	VICOSTONE® ECO SURFACES	GRANITE	LAMINATE	SOLID SURFACES
Scratch Resistance	★★★★	★★★★	★★	★
Stain Resistance	★★★★	★★	★★	★★★★
Chip and Crack Resistance	★★★★	★★	★★	★★★★
Heat and Burn Resistance	★★	★★	★★	★★
Resistance to Household Chemicals Acids and Solvents	★★★★	★★	★★	★★★★
Low Maintenance	★★★★	★★	★★	★
Non-absorbency and Non-porosity	★★★★	★★	★★	★★★★
Mold and Mildew Resistance	★★★★	★★	★★	★★
Flexural Strength	★★★★	★	★★	★★
Color Consistency	★★★★	★	★★★★	★★★★
Immunity	★★★★	★★★★	★	★
KEY	★★★★		EXCELLENT	
	★★		GOOD	
	★		FAIR	

## About Us

With over two decades of excellence, VICOSTONE® stands among the world's premier surfaces manufacturers. VICOSTONE® is trusted and favored by customers, architects, and interior designers in more than 50 countries, including demanding markets such as the United States, Canada, Europe... With a global distribution network, VICOSTONE® products are now available on all continents and are recommended by interior designers and architects.



## Why VICOSTONE® Is Your Top Choice?

### GLOBAL CAPACITY

Powered by seven cutting-edge Italian Breton production lines, VICOSTONE® stands as a global leader, recognized among the largest suppliers of countertops worldwide.

### CUTTING-EDGE TECHNOLOGY

Our technology complies with the highest environmental standards, maintaining the same level of performance, durability, and resistance.

### TOP QUALITY

VICOSTONE® offers the premium quality and most durable engineered stones on the market. Our slabs outperform other suppliers in terms of glossiness, hardness, and density.

### DISTINCTIVE DESIGN

VICOSTONE® offers designs that are both natural-looking and distinctive. We are setting industry benchmarks, inspiring and providing originality that set us aside and giving our clients more options and satisfaction.

### VERSATILE SIZING OPTIONS

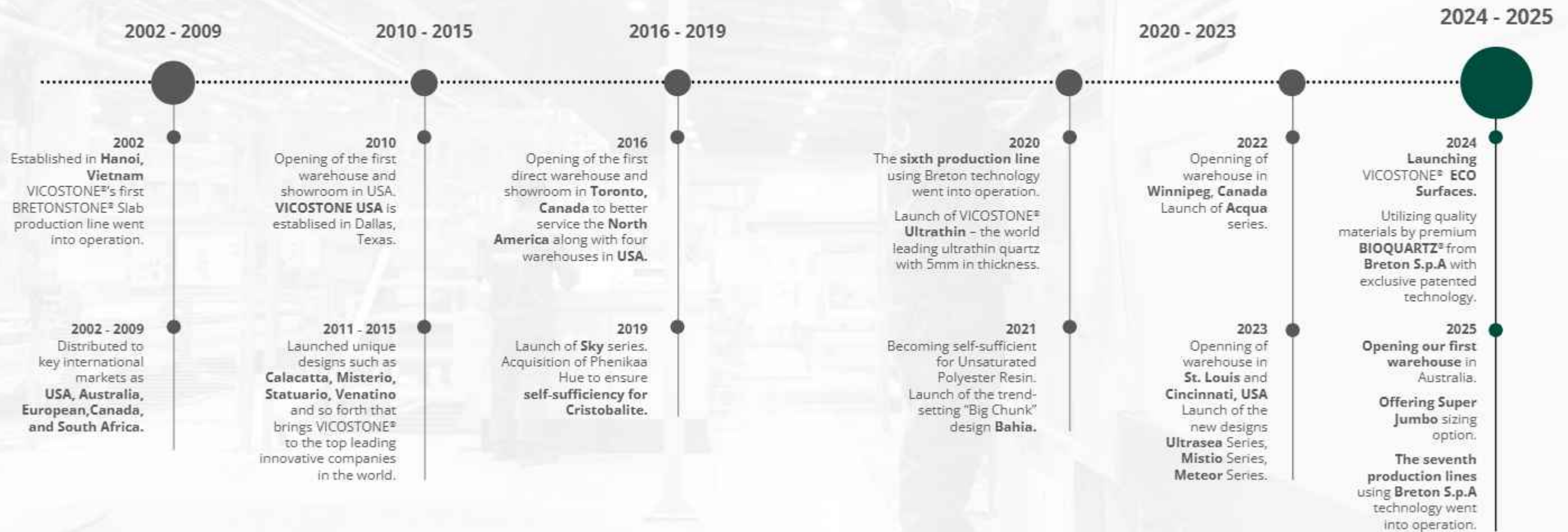
VICOSTONE® provides Super Jumbo slabs, measuring 2007x3454mm, ensuring optimal material yield and seamless installation for large-scale projects. We also offer a cut half-slab format for efficient material use, tailored to the specific needs of each project.

### SUSTAINABILITY COMMITMENT

Sustainability is at the heart of everything we do, guiding our efforts to innovate responsibly and create lasting positive impact for both people and the planet.



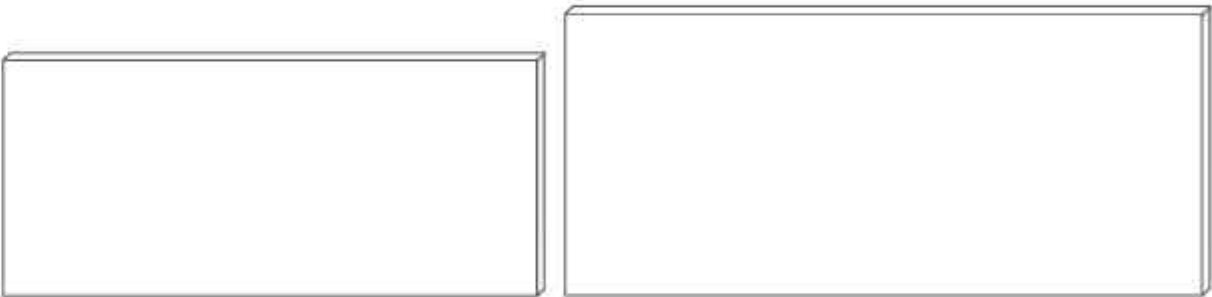
# Milestones



## Certificates



## Slab Sizes



**Jumbo Size**  
1650x3300mm ( 5.445 m<sup>2</sup>)

**Super Jumbo Size (\*)**  
2007x3454mm (6.932 m<sup>2</sup>)

## Product Features



## Slab Weight (\*\*)

Thickness	Jumbo	Super Jumbo
20 mm	250 Kgs	320Kgs
30 mm(*)	375 Kgs	480 Kgs

(\*) Limited, please contact us for checking availability.  
 (\*\*) Weight may vary between different designs.



**VICOSTONE**  
ECO SURFACES



1710 - Helia



Scan QR to explore our website

## VICOSTONE AUSTRALIA

**Email:** [info@vicostone.au](mailto:info@vicostone.au) | **Website:** [www.vicostone.com.au](http://www.vicostone.com.au) | **Tel:** 0389 070 202 | **Follow us:**   

### Showroom Melbourne

17-21 Babbage Drive, Dandenong South, VIC 3175, Australia

### Showroom Sydney

1/97 St Hilliers Road, Auburn, NSW 2144, Australia